

Personal Tracker

Anti-aggression pocket device with GPS



PERSONAL TRACKER: pocket device with GPS



GPS

GSM



The **Personal Tracker** is a pocket small device for personal safety with an integrated GPS system and a GSM/GPRS network technology. It has a panic red button to give instant help from a Central Station (or other recipients) which includes the geographical coordinates: this guarantees a quick emergency intervention. The central may even talk with the people in trouble, requesting their position and if necessary, activating a monitor to track their movement in real time (tracking function). The GSM/GPRS network allows the transfer of high-speed signals, with low traffic costs and can be used throughout the country limitless (according the provider line chosen).

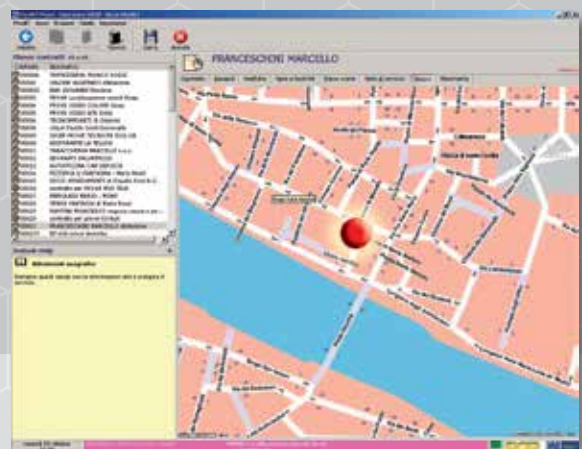
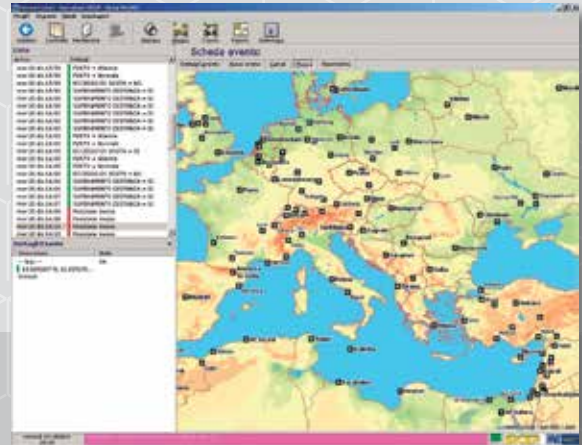
The Personal Tracker has also the following functions:

- **Listen-in**
This function can be remotely activated with a password to immediately check the situation.
- **Man Down**
In the event of fall or sudden illness, position can be automatically sent (with a max. 60 minutes programmable delay). This function may be added with a sound.
- **GeoFence**
Early warning in case of entry/exit from specific freely programmed geographic round areas.



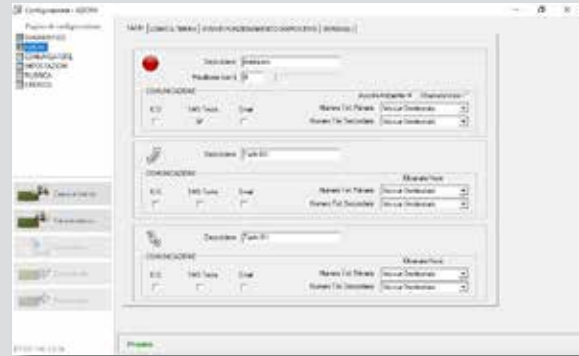
Functional characteristics

- GPS pocket tracking system for GSM/GPRS networks
- Complete management of all functions with the Central Station MvsNET
- Send all information by SMS or e-mail to set recipients
- Possibility to do or receive calls (16 numbers phone-book)
- Red panic button to send quickly a request for help
- Two speed freely programmable dialling keys (data, e-mail, voice or SMS)
- Periodic position check (every minutes or hours) set time
- Tracking function to be remotely activated (programmable time in seconds)
- Listen-in (see above)
- Man down with accelerometer function (max 60 minutes programmable time)
- Delay (pre-alarm) function set (max 60 minutes programmable time)
- GeoFence function (up to 8 free programmable areas)
- Optimized GPS power consumption by the accelerometer motion sensor
- Event log locally or remotely available (up to 1000 events)
- On/Off and low battery information
- SIM M2M Data or Voice (subscription or pre-paid type)
- Low credit or time validity SIM check
- Local or remote programme function



Local or remote programming

The programme of the Personal Tracker may be easily done with SicepConnect PC software, which let overview and edit all parameters through graphical Windows-style pages. These may be stored and reloaded from PC file in order to built a customised programme. The device allows locally or remote connections by using the GSM/GPRS network.



Diagnosis

During the programme setting, it is possible to use a “diagnosis” page to verify the GPS and the GPRS connections. It also allows to test all the vectors of communication (GPRS, SMS, e-mail).

Management of Personal Tracker

• Central Monitoring Station MvsNET

The CMS for monitoring alarms MvsNET allows to manage all advanced functions of the Personal Tracker by using the GSM/GPRS network.





User

- The user may control the Personal Tracker in an easy way by sending text SMS to the device. With some preset commands the following functions are possible:
 - Receive geographical coordinates via SMS or e-mail
 - Receive a call by the Personal Tracker
 - Activate the listening function
 - E-mailing from the Personal Tracker with the last 50 positions from specific dates and hours (viewable on Google Maps® links)
 - Enabling tracking with receiving data through Sms/E-mail.

With the software SicepConnect the user may also verify the right functioning of the Personal Tracker and download all the geographic positions recorded (viewable on Google Maps® with direct link)

Functional applications

- Guards
- Isolated employees
- At-risk groups
- Women, Children and Kids
- Ancient people
- Disabled
- Sports

SPECIFICATIONS

Power supply	Li-ion 3.7V 1200mA/h rechargeable battery
Connector	mini-USB for local configuration and to recharge battery
GSM/GPRS	Quad band 850/900/188/1900 MHz
GPS	High sensitivity, single chip 66-channels SiRFstarIV or MT3329 MediaTek
CPU	32 bit ARM Cortex
Antennas	GPS and integrated GSM/GPRS antenna
Display	LCD
Size	93 x 53 x 23 mm
Weight	100 gr
Colours	White / Black
Included Accessories	Battery charger 230Vac input / 5Vdc output USB - mini-USB cable Belt clips
Optional Accessories	Car battery charger

