

SICEP[®]

GEO-TRACK

GE  TRACK

SICEP
MADE IN ITALY



The GEO-TRACK is an innovative satellite system in GSM / GPRS with 4 inputs and it can simultaneously manage the GPS and GLONASS. The device has been completely redesigned to obtain a compact device, small size, with low cost and easy to install. The GEO-TRACK allows, thanks to all of its features, to fully satisfy any market requirement for the control of vehicles (cars, trucks, camper, motorcycles, boats, motor yachts, etc. etc.).

The GEO-TRACK has several features like:

Management of GPS and GLONASS systems

The GEO-TRACK can manage satellite systems GPS (Global Positioning System) and GLONASS (Global Navigation Satellite System). The benefit of using coordinated both constellations are:

- Reduction in the time of acquisition
- More accurate positions
- Best attitude in the presence of natural obstacles (trees, houses, etc..) which restrict the opening to the sky and therefore the reception of signals.

Antennas integrated

The presence of integrated antennas GSM / GPS inside of the product allows a very flexible use.

Battery back-up

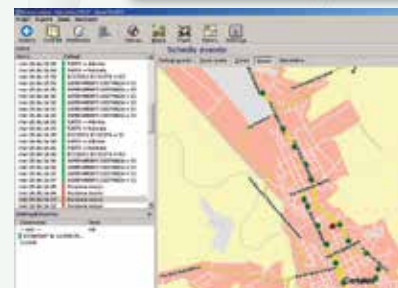
The emergency battery lithium, rechargeable, integrated within the device allows an autonomy of operation, in case of power supply failure, ensuring a high level of safety.

GeoFence

Early warning in case of input / output from specific geographical areas freely programmable (No. 100 targets set).

Functional characteristics

- Satellite tracking system in GSM / GPRS
- 4 inputs and 4 outputs programmable
- Simultaneous management of GPS and GLONASS to obtain more accurate positions and reduction in the time of acquisition of the satellite
- Antenna internal integrated and connector for outdoor models
- Autonomy with battery back-up (lithium, rechargeable)
- Complete management of all its functions with Central Monitoring station mod. MvsNET
- Send of SMS text or E-mail to recipients set (n° 2)
- Send periodic position in the time set (every minutes or hours)
- Send periodic position passed a programmed distance (in meters or kilometers)
- Information of excess of stop programmable
- Send information over speed
- Tracking function may be activated remotely (programmable time in seconds)
- GeoFence option (No. 100 areas freely programmed)
- Automatic check of off course and out area (only MvsNET)
- Optimized GPS power consumption by motion sensor
- 3-axis motion sensor for the recognition of bumps, lifting or movements of the vehicle
- Radio transceiver integrated 868Mhz for the management of the BiTech devices
- Historic available locally or remotely (up to 1.000 events, overwrite)
- Use SIM M2M Data or Voice (contract or pre-paid)
- Managing credit and time maturity SIM
- Local or remote programming



Local or remote programming

The programming of the GEO-TRACK may be done easily with the software SICEP MVC which lets view and edit parameters through graphical Windows-style pages. These may be stored and reloaded from files on PC in order to build a custom programming. The device allows to do this either locally or remote connection using the GSM/GPRS network.



Diagnosis

During the programming is possible to use a page of "diagnosis" to verify the GPS/GLONASS system and the GPRS connection. It also allows to test all the vectors of communication (GPRS and SMS).



Management

• Central Station MvsNET

The Central Station for monitoring alarms mod. MvsNET allows to manage all the advanced functions of the GEO-TRACK using the Gsm/Gprs network.



• User

The user may control the GEO-TRACK in easy way sending to the device SMS text or E-mail. With some commands preset is possible to manage the locator viewable the positions on Google maps with link.



With the software SICEP MVC the user may also verify the right functioning of the GEO-TRACK and download all the geographic positions recorded (viewable on Google Maps with link).



Specifications

• Power supply 9-26Vdc through vehicle
• Back-up lithium battery for 1100/2200 mA/h
• 4 inputs and 4 outputs programmable
• GSM Quad-Band Integrated
• Module GPS/GLONASS Integrated
• Antennas integrated with SMA connector for outdoor models
• USB connector for configuration and battery charge
• 868 MHz radio module BiTech
• Operating temperature from 0°C to 50°C
• Size 133 x 97 x 27mm (W x H x D)

